


TABLE OF CONTENTS

1.0	PURPOSE	3
2.0	SCOPE	3
3.0	RESPONSIBILITY	3
4.0	SAFETY	3
5.0	DEFINITIONS	3
6.0	REFERENCE DOCUMENTS	3
7.0	RECORDS	3
8.0	PROCESS / PROCEDURE	3
8.1	INPUTS	3
8.2	TOOLS	3
8.3	RELATED PROCESSES / PROCEDURES	3
8.4	ENTRY CRITERIA	4
8.5	ACTIVITIES	4

	Document Number P370429	Revision A	Page 3 of 18
Title XTR/XG Web Page Installation Instructions			

1.0 PURPOSE

The XTR/XG have an Ethernet option. Currently, the Ethernet Option Board contains a Lantronix chip. This chip requires that it be configured with a suitable web page in addition to the various interface settings (i.e. default baud rate, default port, etc.) This procedure shows how to install firmware on this Lantronix chip.

2.0 SCOPE

This procedure is only concerned with installation.

3.0 RESPONSIBILITY

Engineering is responsible for production of the code and maintenance of this procedure. Production is responsible for following this procedure in the production of new XTR/XG units.

4.0 SAFETY

This procedure only involves Ethernet and the use of a standard windows PC, so normal precautions when using and/or connecting a computer are appropriate.

5.0 DEFINITIONS

6.0 REFERENCE DOCUMENTS

The following were referenced in the creation of this document:

1. ISO/IEC 9000: Quality Management System
2. Xantrex 0050007: Creating Policy and Procedures
3. Xantrex 0060040: Procedure, Product Life Cycle Process (PLC)

7.0 RECORDS

N/A

8.0 Process / Procedure

8.1 INPUTS

N/A

8.2 TOOLS

- Ethernet Cable
- PC with Windows XP (or higher)
- Lantronix Device Installer Software

8.3 RELATED PROCESSES / PROCEDURES

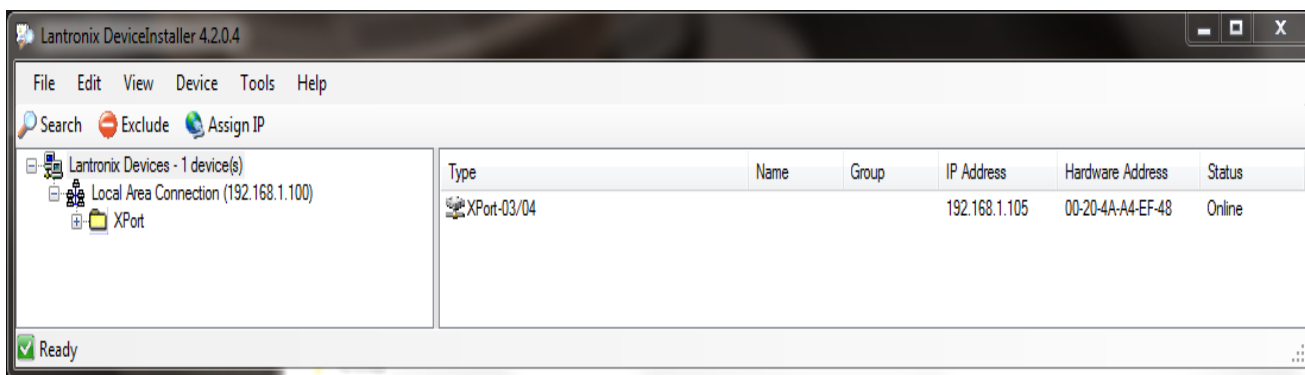
N/A

8.4 ENTRY CRITERIA

N/A

8.5 ACTIVITIES

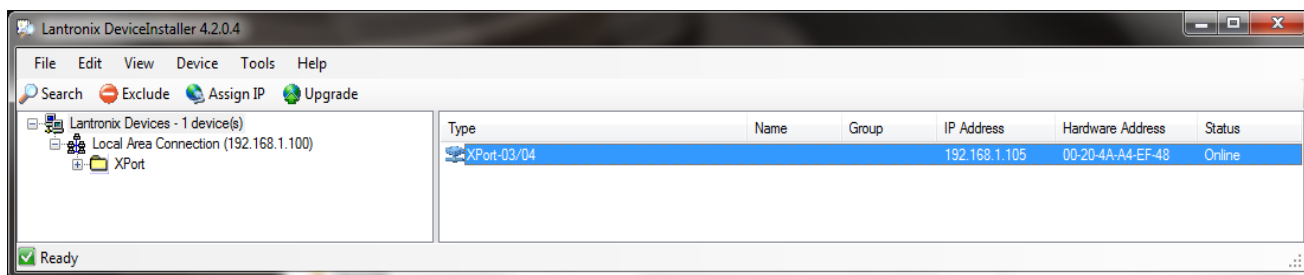
1. If the DeviceInstaller software is installed then go to Step 2.
 - 1.1. Open up the file “device_installer_4.3.0.0.exe” Follow the instructions and install the software
2. Connect the XTR to Ethernet
 - 2.1. Connect one end of an Ethernet cable to the port on the back of the XTR which is marked “LAN”
 - 2.2. Connect the other end to a jack connected to the same LAN as your PC
 - 2.3. Turn on the power on the XTR
3. Program the XTR using the DeviceInstaller software
 - 3.1. Open up the DeviceInstaller software
 - 3.2. You should be able to see the lantronix device in a window similar to that shown below.



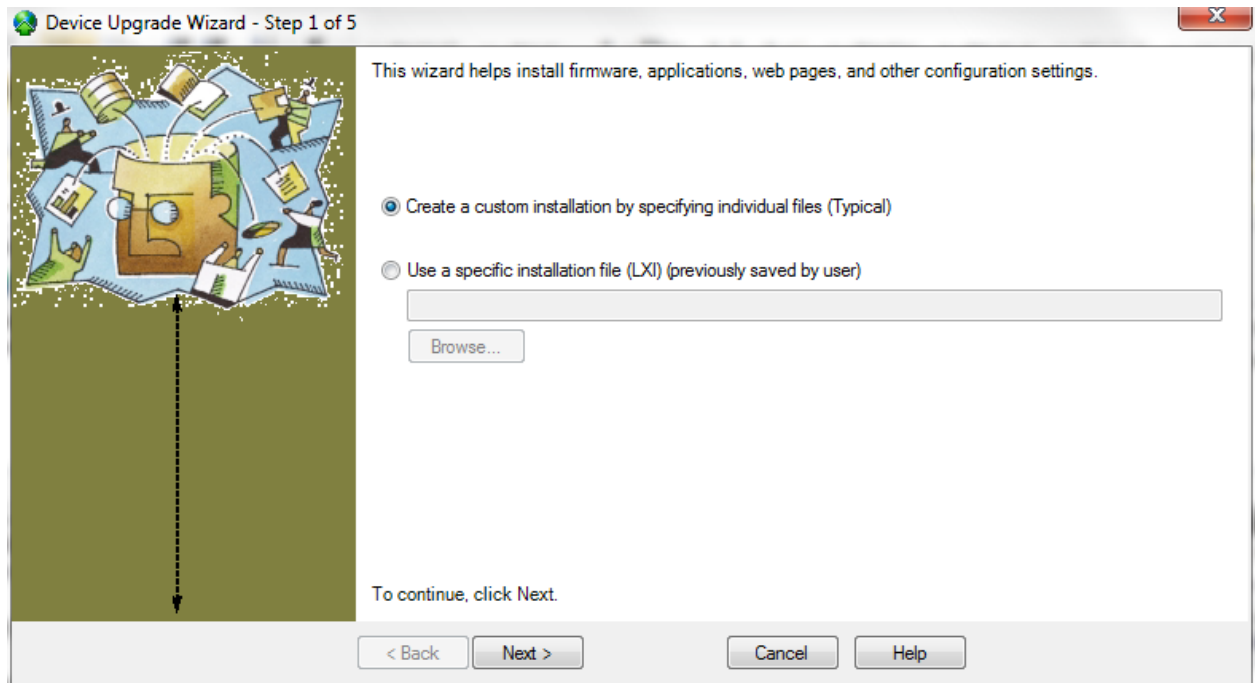
The “Hardware Address” tab lists the MAC address which may be used for confirmation that the correct supply has been found.

3.3. Update the ROM file

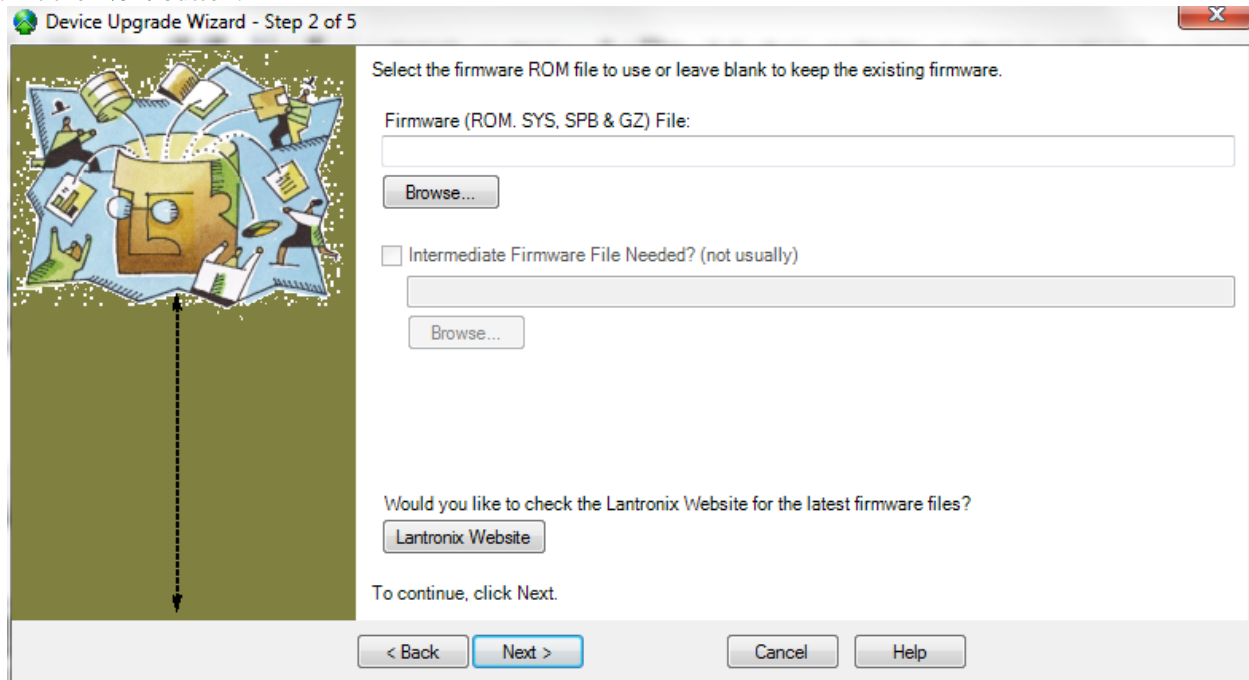
- 3.3.1. Select the supply in the right window pane as in the following picture.



- 3.3.2. Hit the **Upgrade** button and you should see a new window like the following

XTR/XG Web Page Installation Instructions

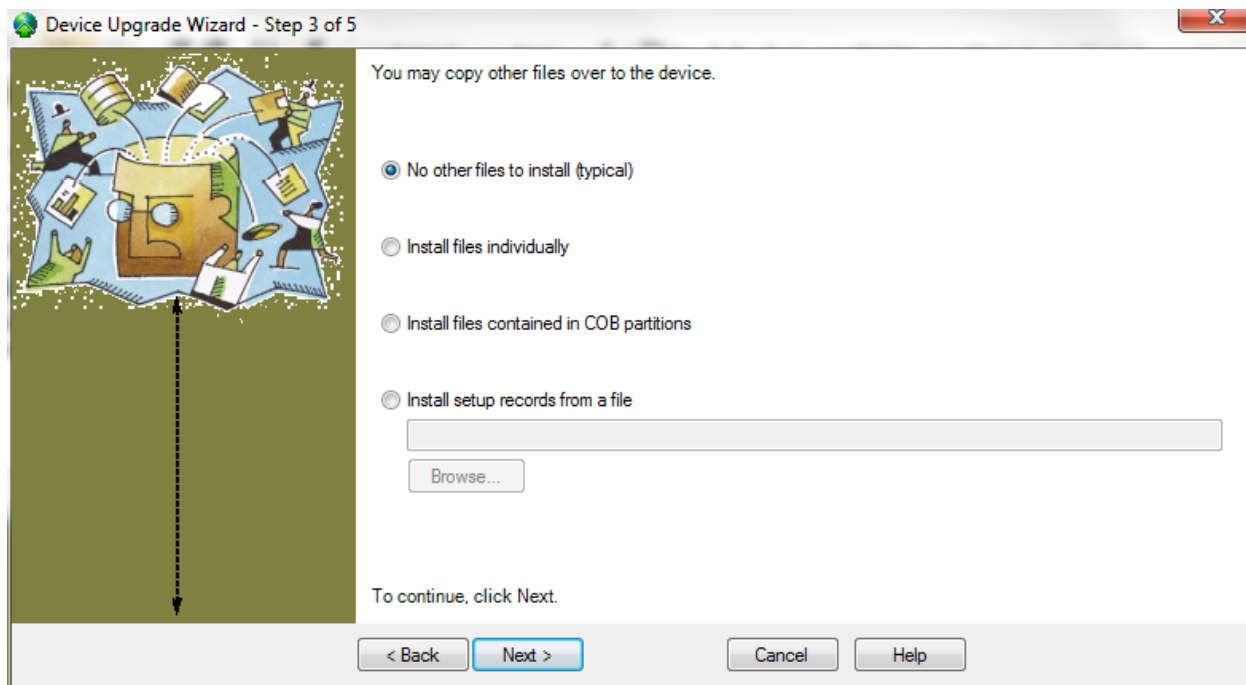
3.3.3. Hit the **Next** button.



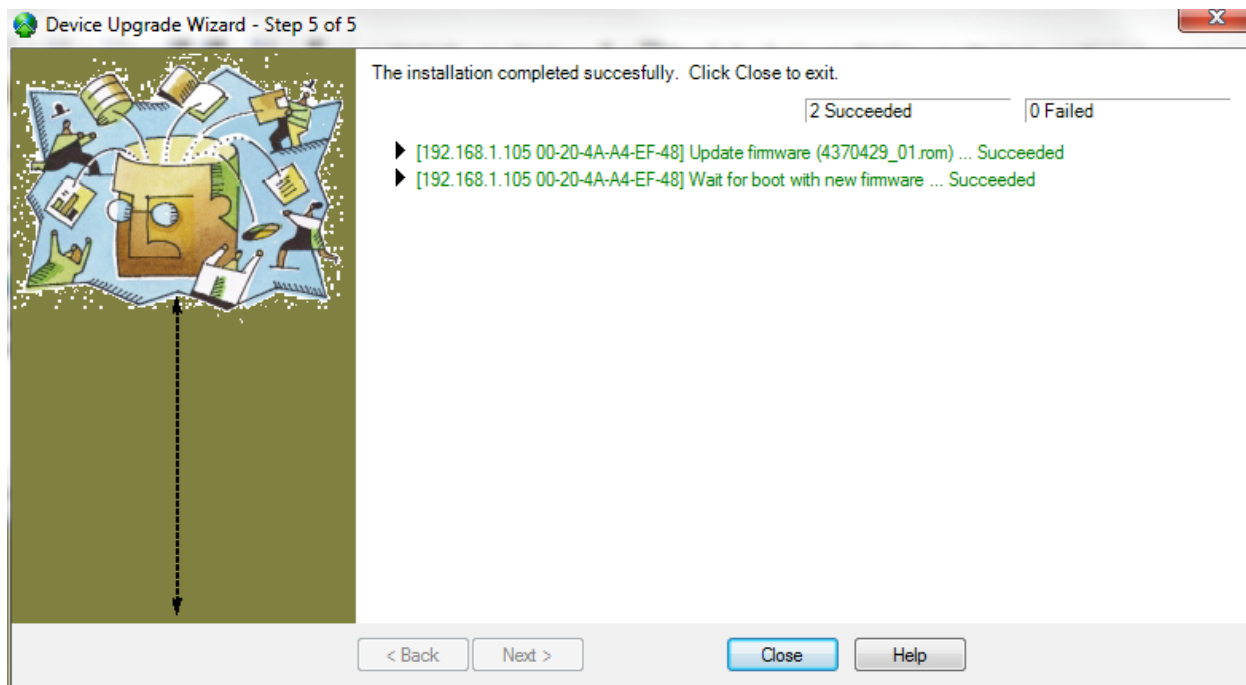
3.3.4. Hit the **Browse** button.

3.3.5. Browse to the **4370429_01.rom** file and select it.

3.3.6. Hit the **Next** button

XTR/XG Web Page Installation Instructions**3.3.7.Hit the Next button**

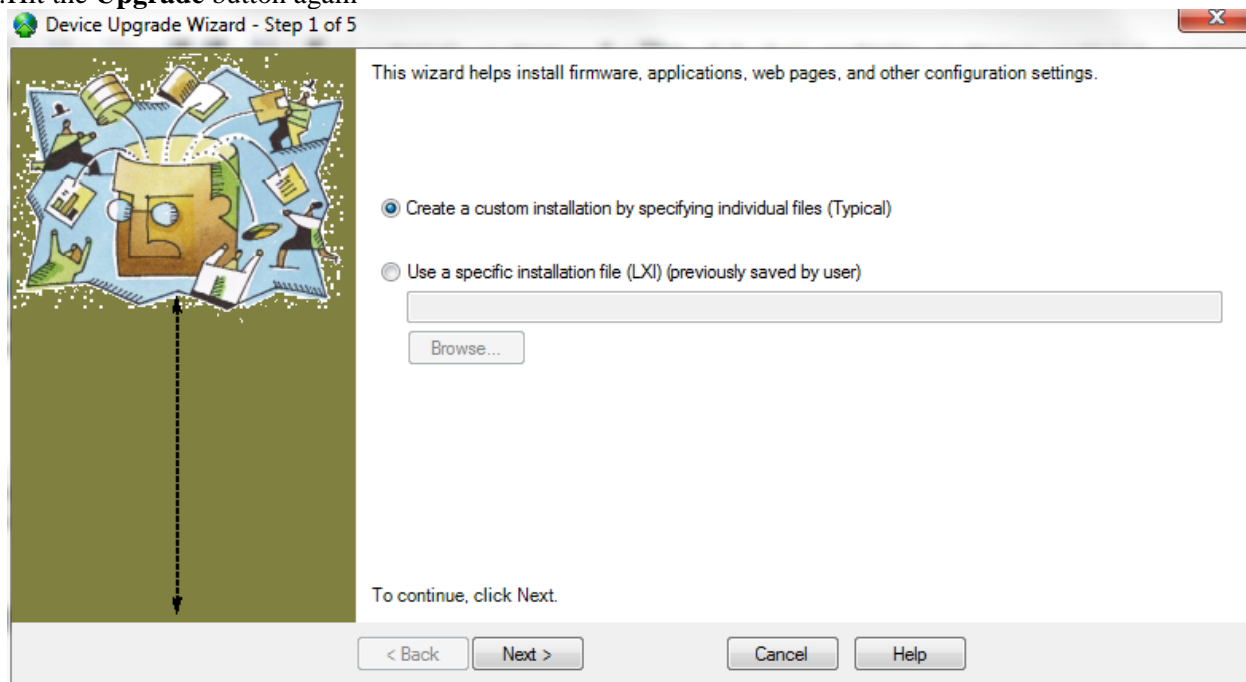
3.3.8.Hit the **Next** button. The device will begin programming. If successful you will eventually see a window similar to the following.

XTR/XG Web Page Installation Instructions

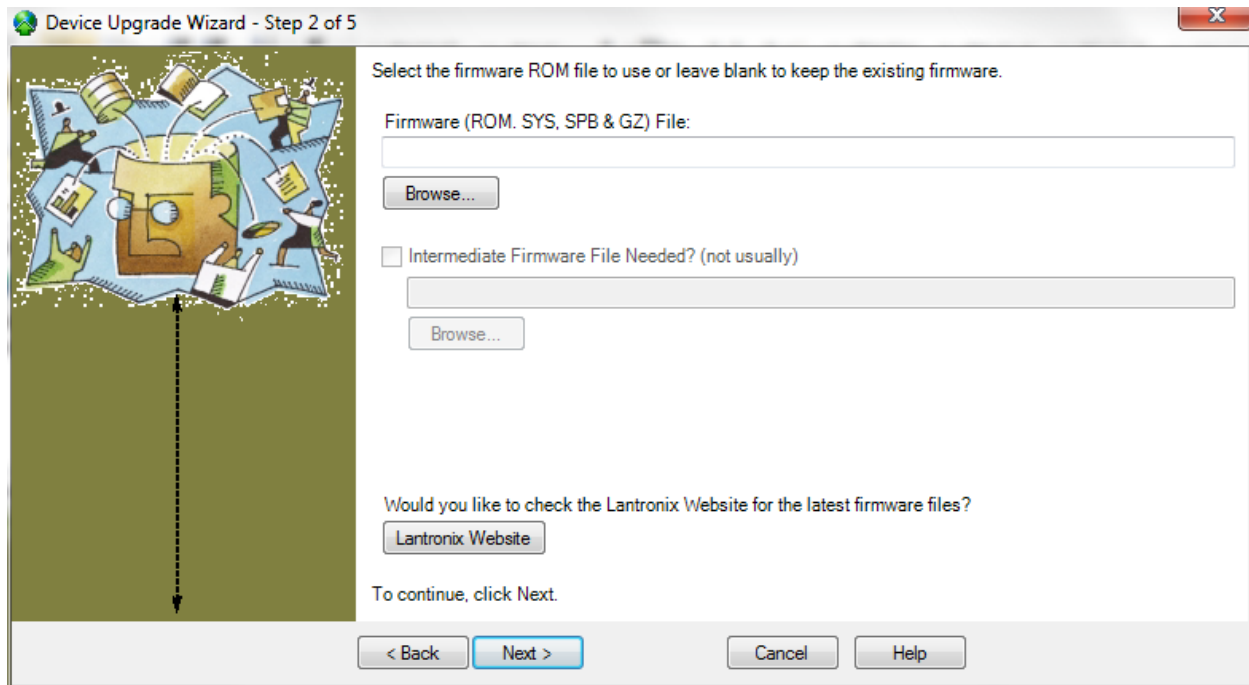
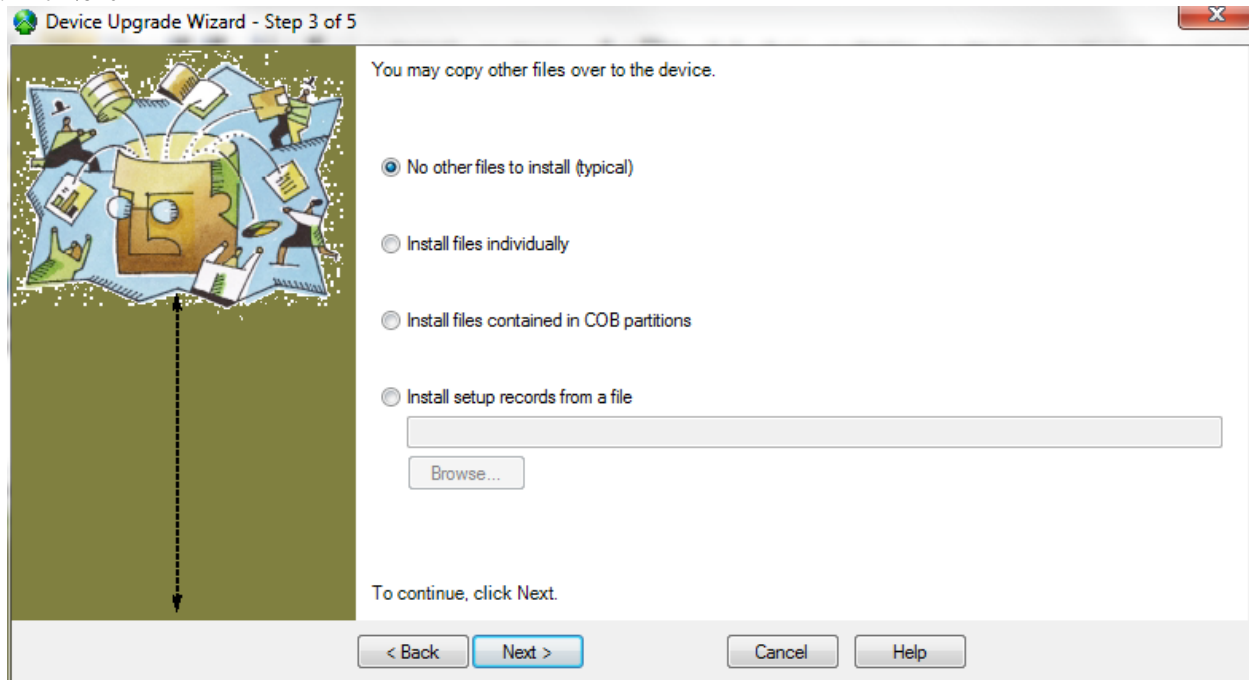
3.3.9.Hit **Close**

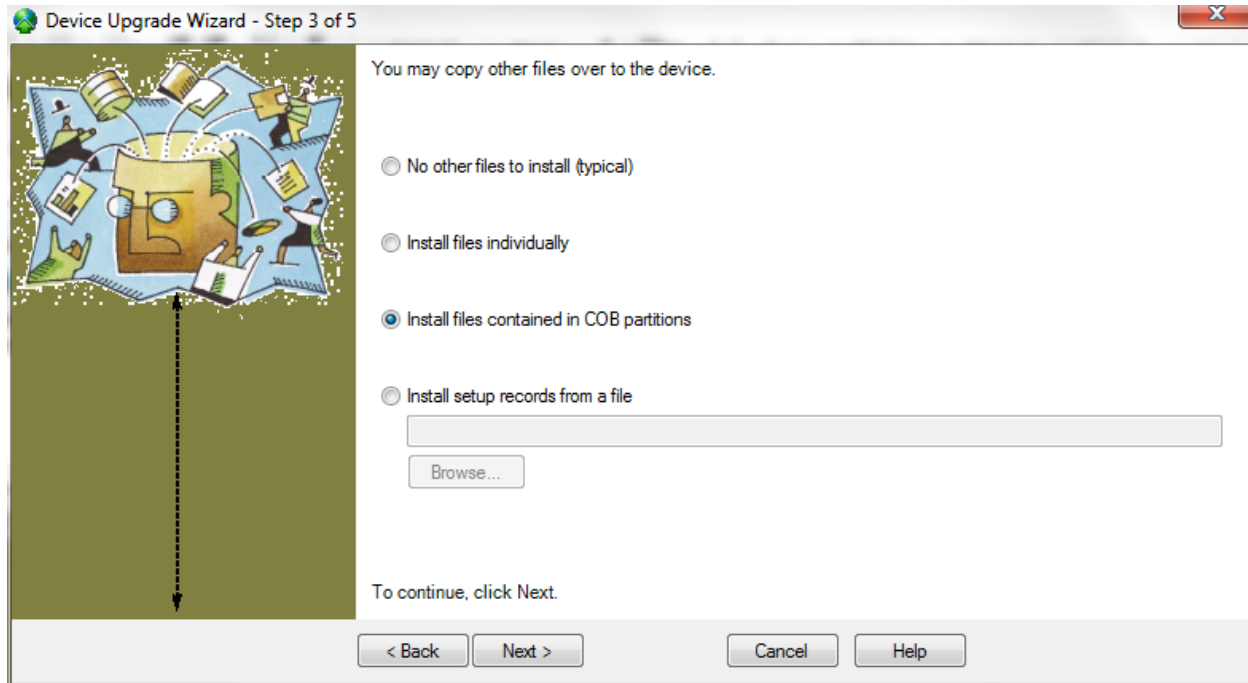
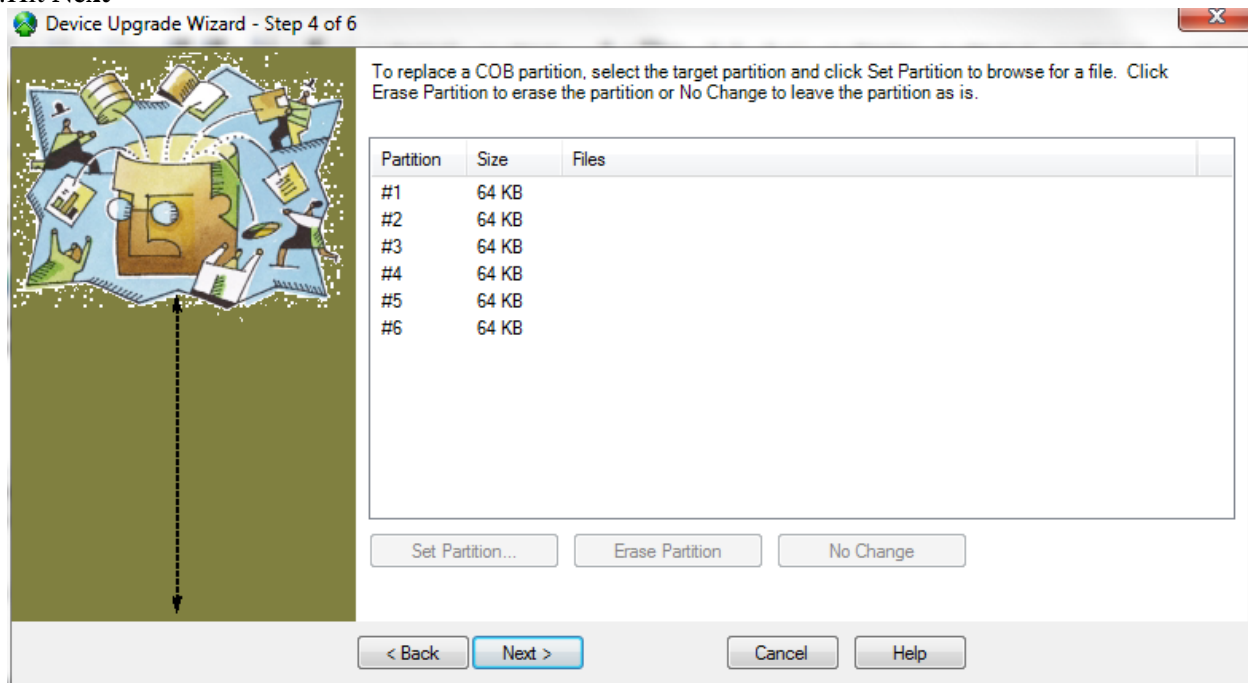
3.4. Set the Partitions

3.4.1.Hit the **Upgrade** button again

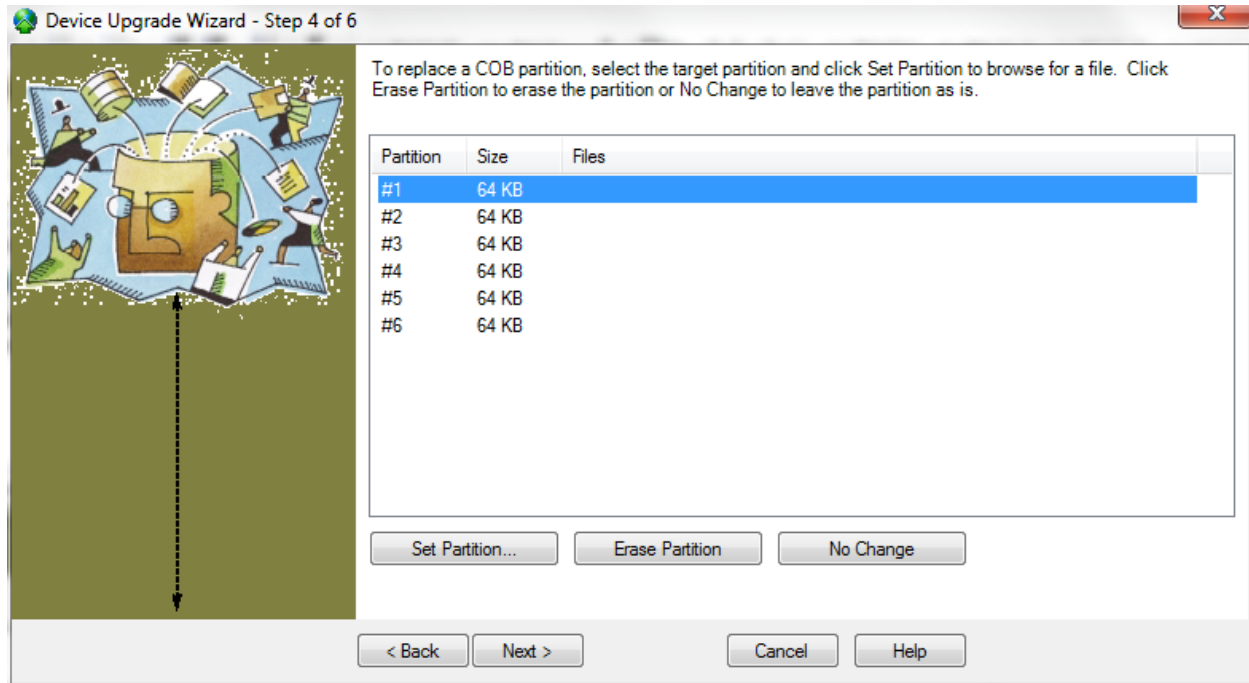


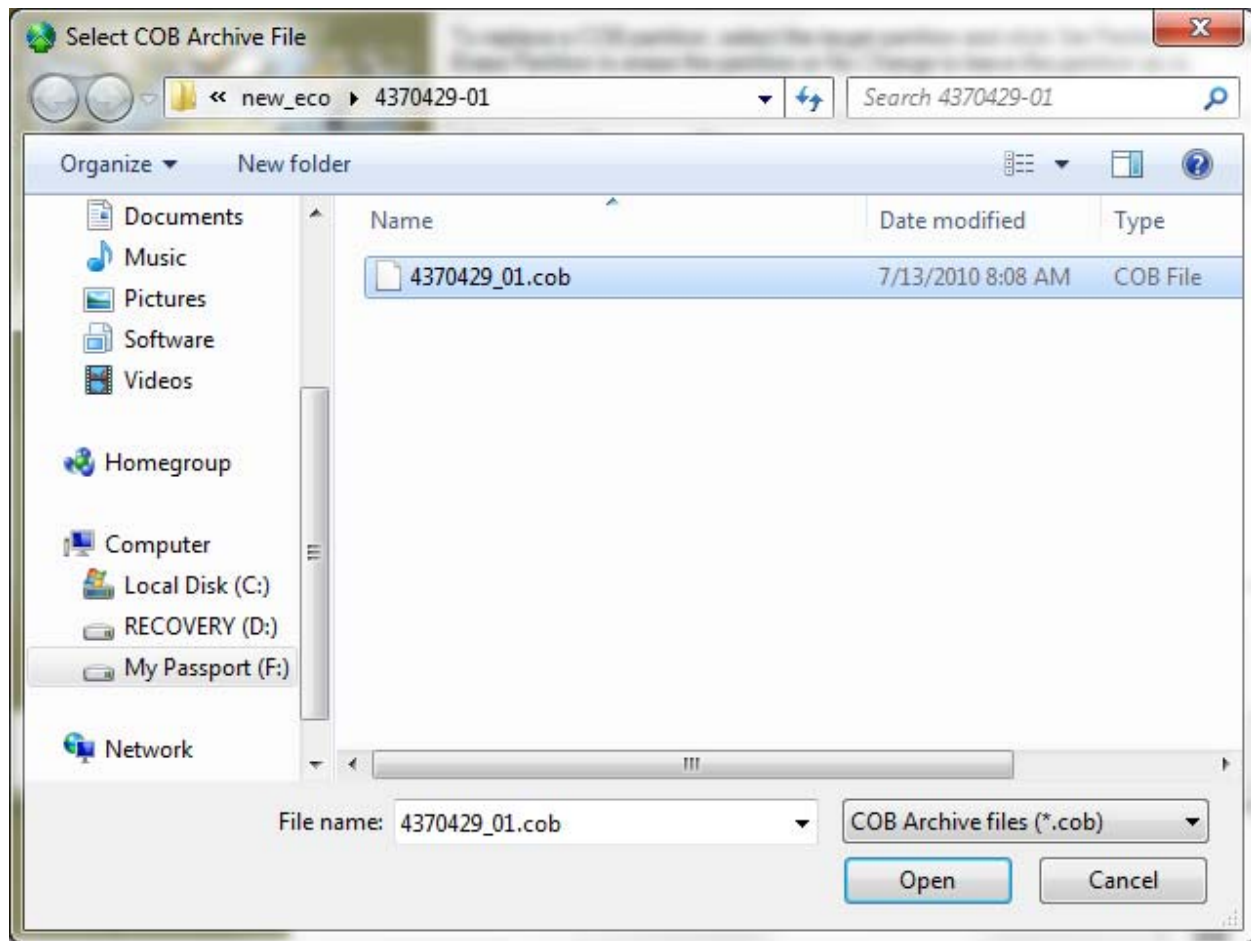
3.4.2.Hit **Next**

XTR/XG Web Page Installation Instructions**3.4.3. Hit Next****3.4.4. Select Install files contained in COB partitions**

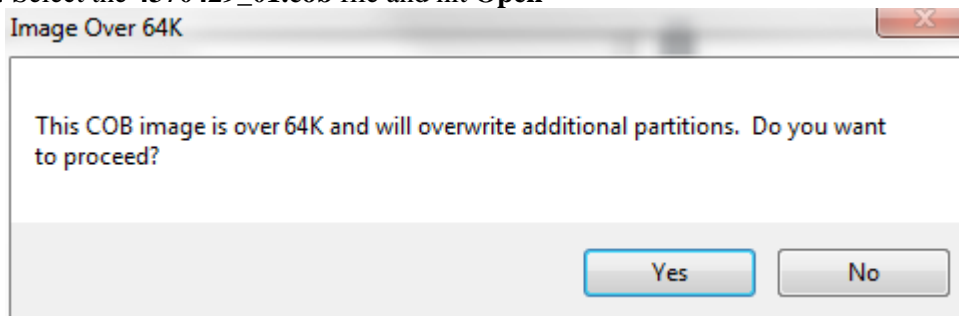
XTR/XG Web Page Installation Instructions**3.4.5.Hit Next****3.4.6.Select Partition #1 in the pane.**

Title

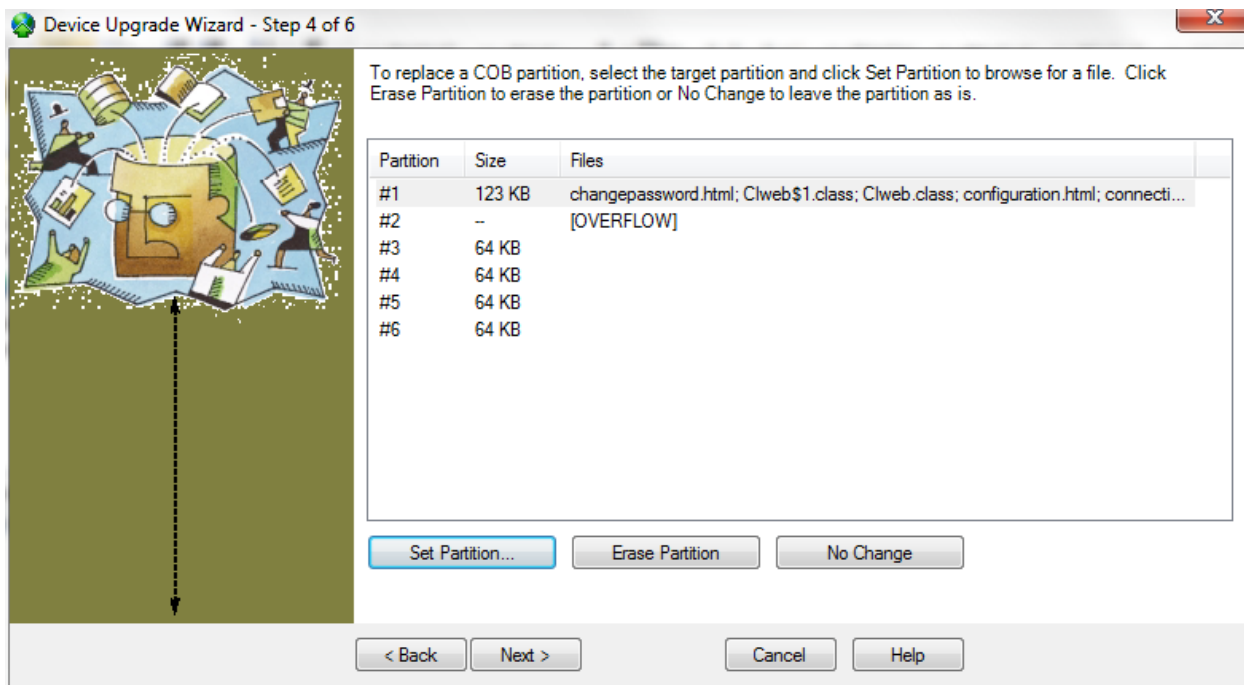
XTR/XG Web Page Installation Instructions**3.4.7.Hit Set Partition**



3.4.8. Select the **4370429_01.cob** file and hit **Open**



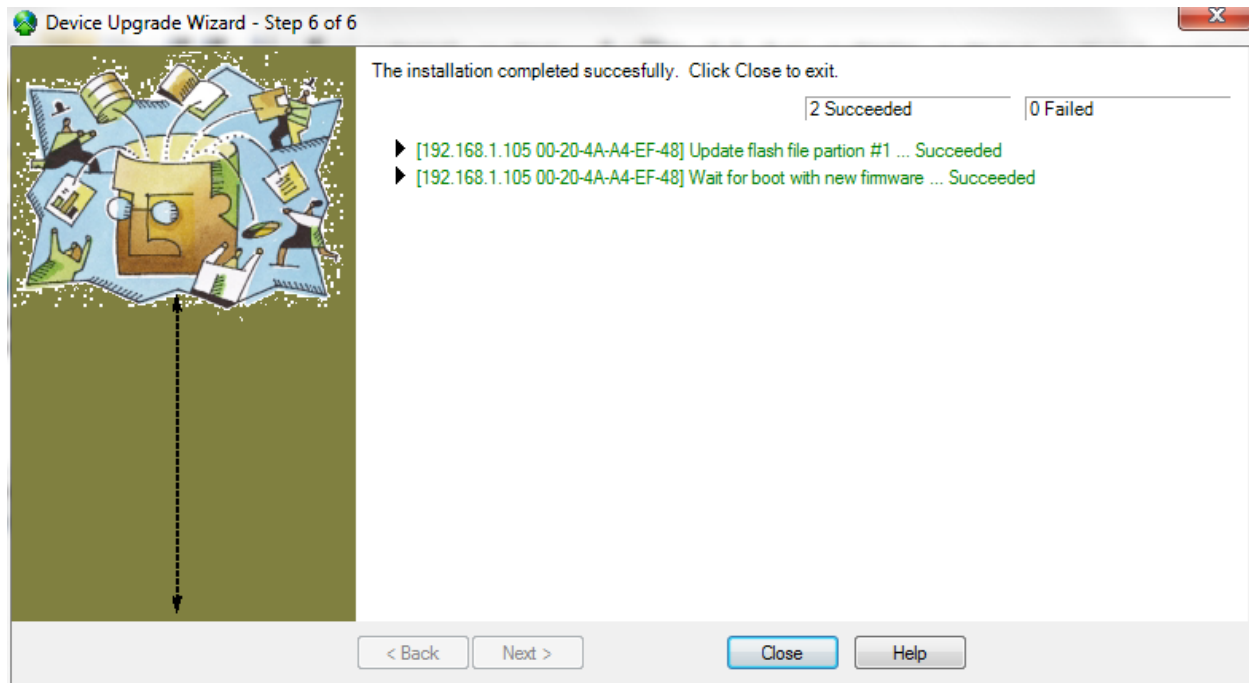
3.4.9. A popup window will appear warning about the COB image is over 64K. This warning is expected. Hit **Yes**



3.4.10. Hit Next



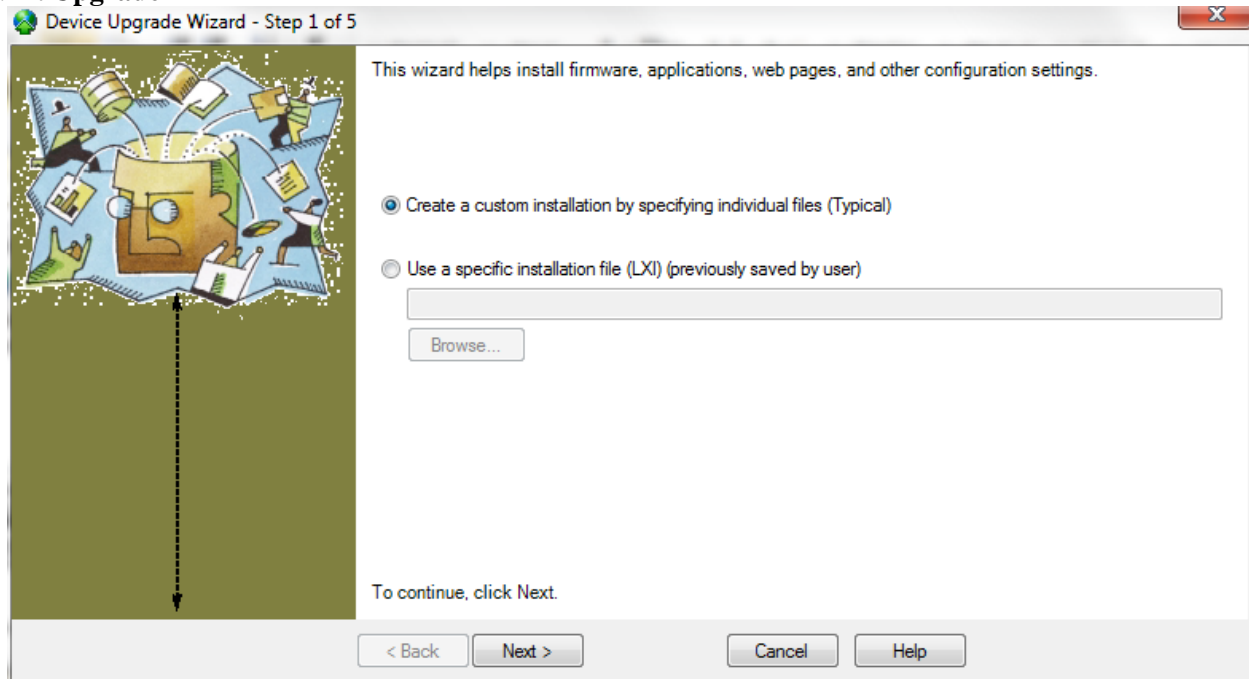
3.4.11. Hit **Next**. The programming will commence. And if successful the following window will appear.



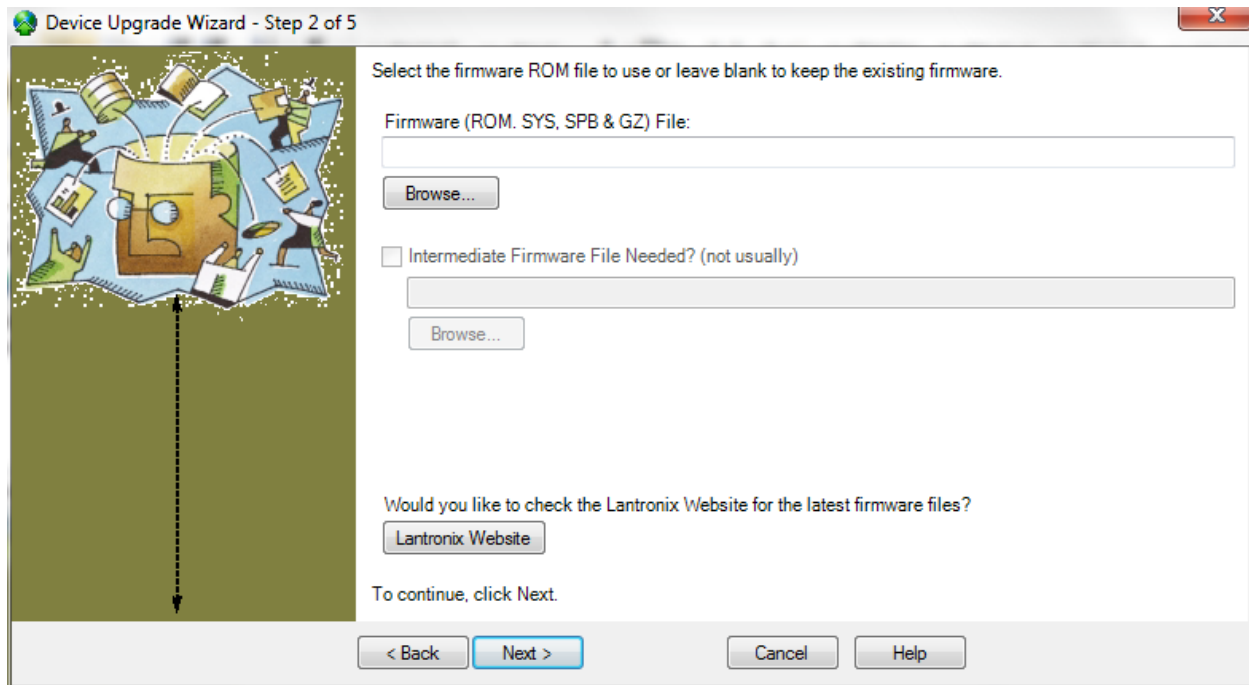
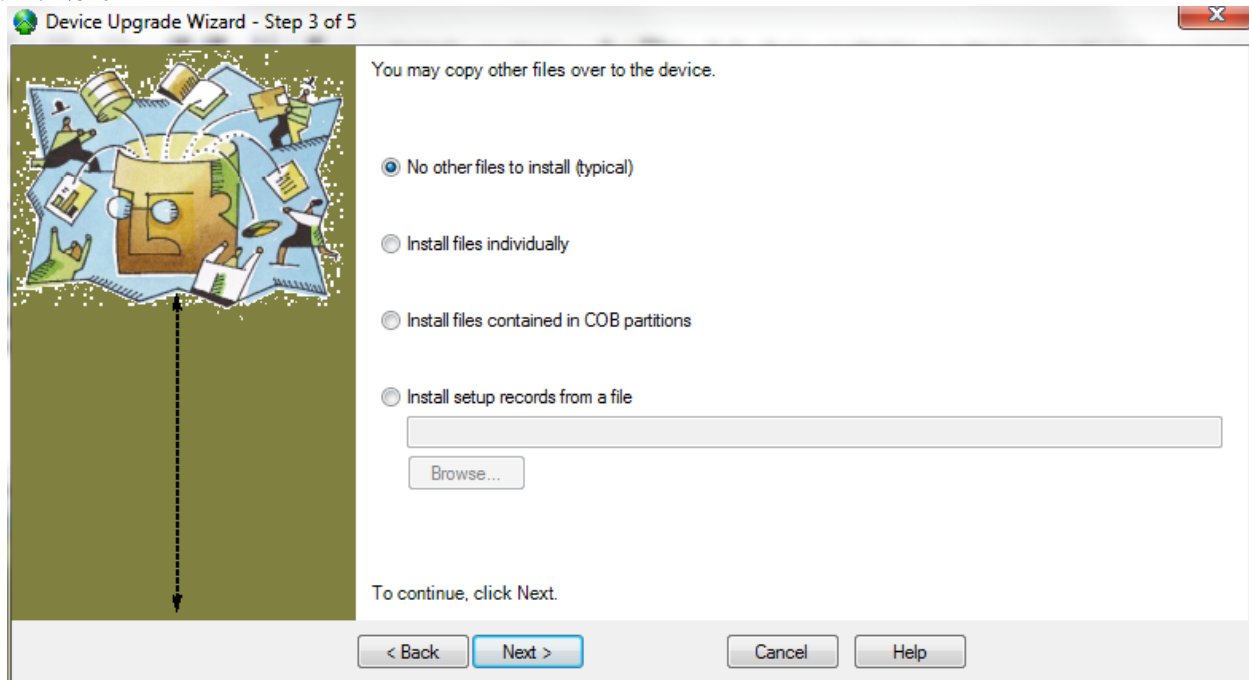
3.4.12. Hit **Close**

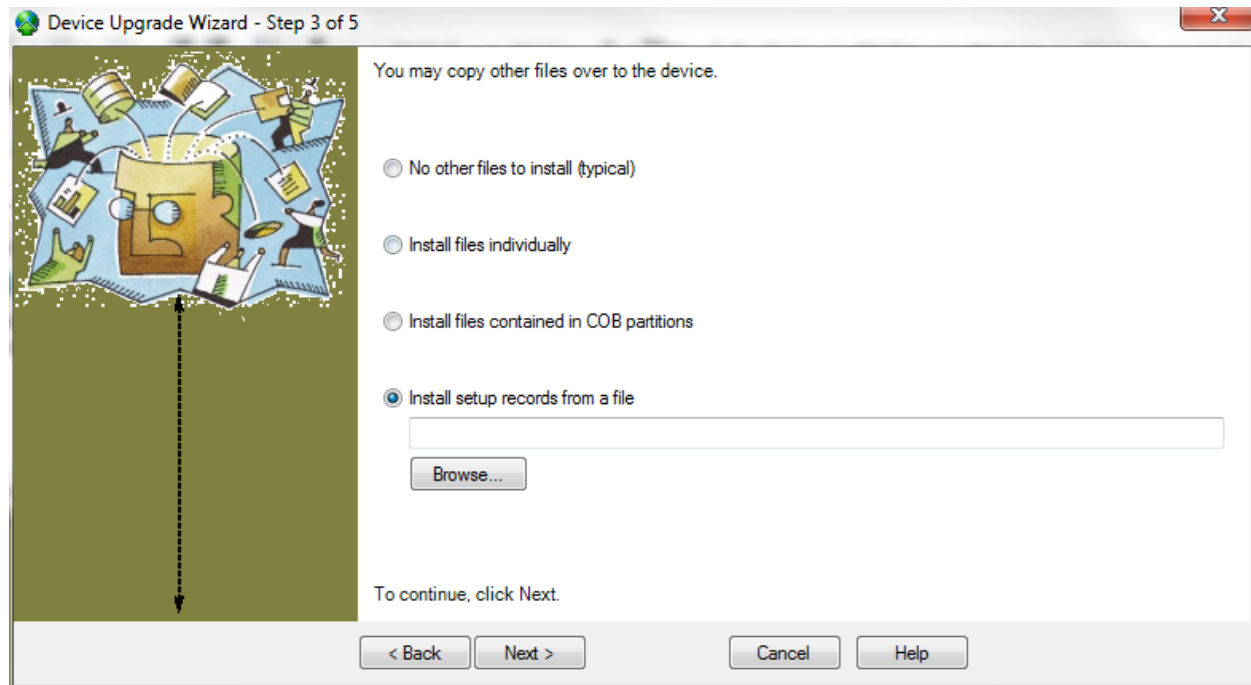
3.5. Program the setup record

3.5.1. Hit **Upgrade**

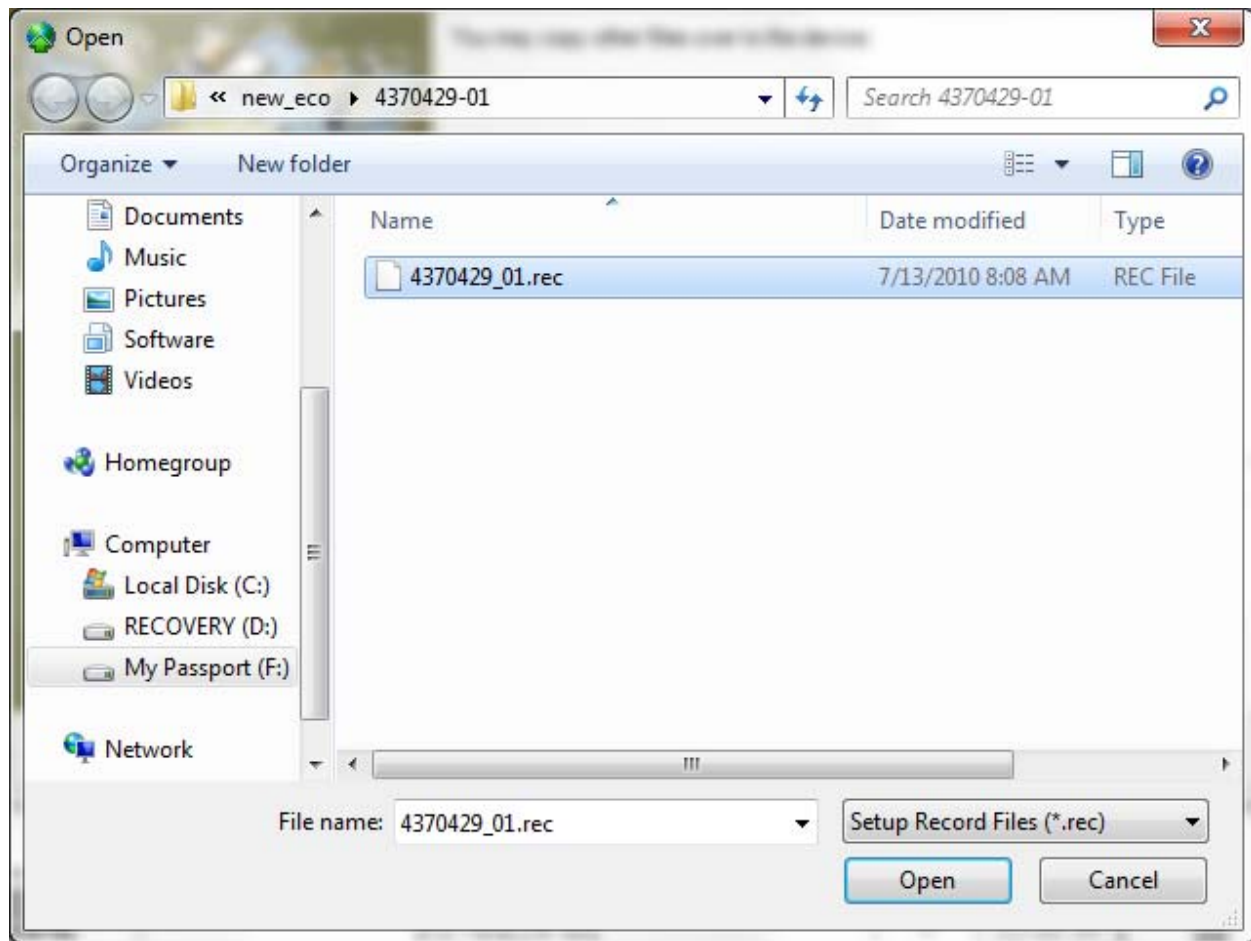


3.5.2. Hit **Next**

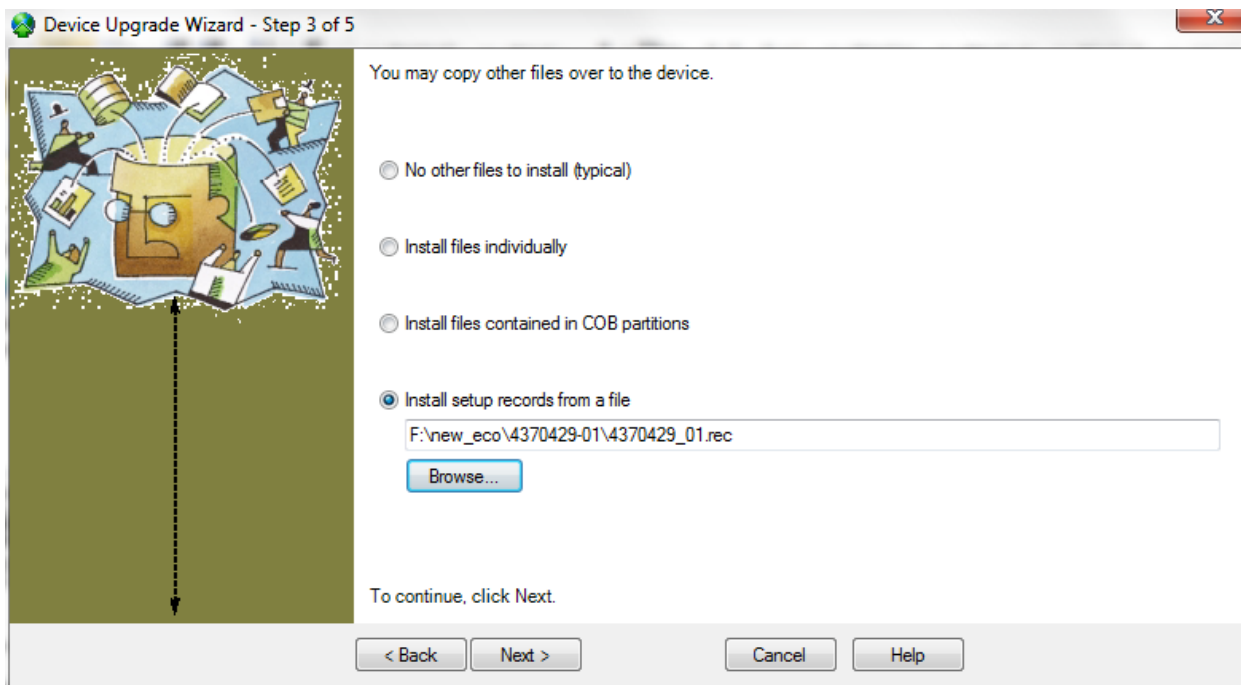
XTR/XG Web Page Installation Instructions**3.5.3.Hit Next****3.5.4.Select Install setup records from a file**



3.5.5.Hit **Browse**



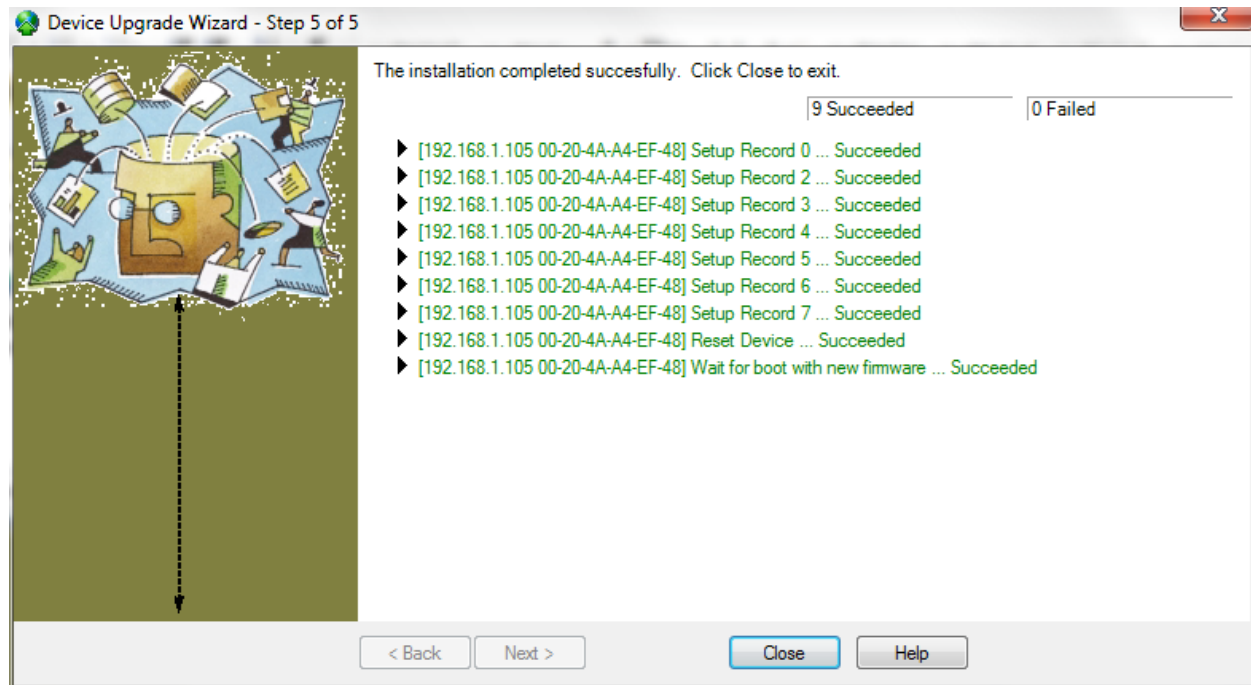
3.5.6. Browse to the **4370429_01.rec** file and hit **Open**



3.5.7.Hit Next



3.5.8.Hit Next



3.6. Label

3.6.1. A label needs to be placed onto the communication board which lists the firmware version.

A suggestion is to add a label that says "F/W Version 1.0"